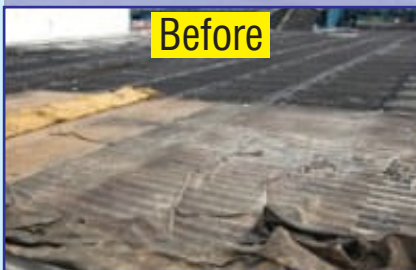
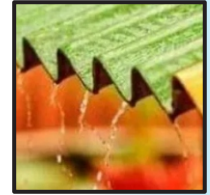




Unique FT Waterproofing Technology For Asbestos, Tin, Gi, Iron & Roofing Sheets



COMPANY PROFILE



ICO Care is engaged in waterproofing application job work since 12 years and providing its valuable services to Indian railways, other government & prestigious private organizations.

The company is authorized applicator and sister concern of Sadee World Pvt. Ltd., an ISO 9001- 2015 certified construction chemicals manufacturing company which has developed many innovative and unconventional products like

WPC-99, WAC-99, CAM-99, HPC-99, PSS-99, WTF-99, SPC-99. These products are highly appreciated by the construction industry and architects Further the company won the national award for excellence in the field of construction chemicals.

ICO Care has developed innovative systems of application for rehabilitation along with the innovative technology of Sadee World Pvt. Ltd., ICO Care has come forward with accomplished number of unconventional waterproofing rehabilitation job work at different railway stations throughout India mainly Church Gate (Mumbai), Mumbai Central, Indore, Ratlam, Dahod, Ahemedabad, Ratnagiri, Mudgaon, Mhow, Ujjain.

The company excels in repairing of asbestos sheet with FT fast track, technology using reinforcement fabric to improve life of asbestos sheet. This state-of-the-art work is done at church gate station on historical building of Indian Railways.

Today in Indian Railways, ICO Care is known for its innovative and quality work.

Under one roof we take care of all kind of waterproofing jobs required in RCC roofs, side walls, manglore tiles, terraces, asbestos sheets, vally gutters, grouting, expansion joints, basements, water tanks, bathrooms etc.

Mangalore Tile Re-reinforcement FT Technology for Repairing & Water Proofing.

Mangalore Tile is commonly used on industrial shades, railway platforms, godowns etc. It is observed that Mangalore Tile deteriorates due to ultra violet rays of sun, climatic changes, rains, dust, moisture etc. and often requires maintenance. Traditionally for maintenance bitumen sheet is used, bitumen is effective for one season only because it melts in summer season and shrinks in winter. Thus due to extreme changes in temperature bitumen leaves the surface of Mangalore Tile. Therefore, this is not a trusted and effective system. Sometimes applicators use chemical putty like Epoxy, PU, Acrylic etc, which are very expensive and not longer lasting, within a short period cracks develop on applied surface.

To over come the problem we developed Reinforcement FT Technology. a unique system of repairing Mangalore Tile along with water proofing The same system of repairing can be applied for isolated cracks, joints, J Hooks or bolting points of Mangalore Tile on the site.

Advantage of Mangalore Tile

reinforcement FT system

- 1 When cracks are repaired on the spot without disturbing the infrastructure & work it saves time & money.
- 2 No repeated repairing is required after Simultaneous covering of j bolts with reinforcement.
- 3 It is most durable system and Saves from recurring expenses of incurred by using chemicals like epoxy, PU, acrylic etc with no results.
- 4 Full lapping areas and joints of Mangalore Tile are covered therefore no leakage is possible from that place.



- 5 Tough water proof surface develops which is Maintenance free.
- 6 Mangalore Tile gets strength with reinforcement
- 7 Life of the Tile increases many fold due to high durability & toughness
- 8 With above cited treatment deterioration of Mangalore Tile minimizes
- 9 Treated surface remains clean, as no fungus, grow on it and no black spots develop.
- 10 Safe, pollution free, eco-friendly, hygienic
- 11 High heat stability between 0°C to 90°C
- 12 High freez thaw stability
- 13 Resistance to high alkali, sulphates, salts, mild acids & water.
- 14 Rust Proof 15 Economical





WATERPROOFING FT SYSTEM AT A GLANCE

- Clean the surface by rubbing with wire brush to remove dust, fungus, grass root, rust & loose material.
- Wash the surface with SAC[®] surface active chemical
- Wash with mild acid solution
- Wash with clean water
- Repair damaged tile and apply ASP-99 (Primer) to get an even surface & strength.
- Cut a piece of fabric as per the required size for reinforcement.
- Put the fabric on the tile and stick it with glue.
- After 40-50 minutes apply a coat of AWC-99 on the surface by brush and let it dry for one hour give one more coat of WAC-99R on the surface.
- Let it dry for 24 hours for full strength.

WATERPROOFING FT SYSTEM AT A GLANCE

▶ **SAC-99: Surface Activation Chemical**

Surface Activation Chemical is for getting best results of chemical application on Mangalore Tile or concrete.

It is nonionic surfactant with water soluble solvents to clean the surface.

It also washes algi & fungus etc. deposited on old sheets or on concrete surface.

▶ **MTP-99: Mangalore Tile Primer**

Mangalore Tile Primer is synthetic resin based fast drying gray viscous liquid for crack filling and strengthening the surface which develops water resistance thick layer on the surface and provides an even surface for reinforcement. It develop full strength with in 60 minutes of application.

▶ **Reinforcement Fabric**

A specially developed course cotton fabric

▶ **Synthetic White Glue (Sp. Binder for Fabric & Mangalore Tile)**

It is a powerful synthetic water base white coloured binder which instantly sticks the fabric with primed Mangalore Tile surface. After drying it is fully stable. The dried surface is not effected with water. It is highly resistant to weather and sunlight.

It is an elastomeric compound forms a very tough bond with substrate having good permeability rating. Resistant to high alkalis, mild acid, sulphates salts, carbon dioxide.

▶ **MWC-99: Mangalore Tile Waterproofing Compound**

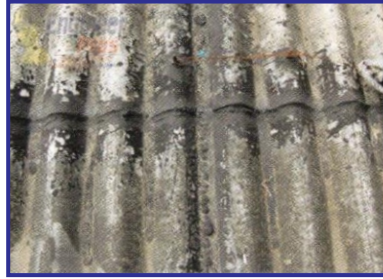
Mangalore Tile waterproofing compound is single component synthetic resins based fast drying gray viscous chemical compatible with all masonry substrate. Highly resistant to algae fungus and micro organism. Resist alkalies, salts and atmospheric pollutants not effected by ultraviolet rays. Highly durable tough coat is formed withstand structural movements.



ASBESTOS / ROOFING SHEETS WATERPROOFING



Before



Before



During



During



During



During





FOR CIVIL PROJECT APPLICATION WORK

ICO CARE

Bank Details : STATE BANK OF INDIA

Branch : P.Y. ROAD, INDORE

ACCOUNT NO. 32280325544

IFSC COND : SBIN0030015

FOR IMPORT & EXPORT

SWIFT CODE : AD CODE :

FOR PURCHASE / PROCUREMENTS

SADEE WORLD PVT. LTD.

Bank Details : STATE BANK OF INDIA

Branch : P.Y. ROAD, INDORE

ACCOUNT NO. 41844913685

IFSC COND : SBIN0030015

FOR IMPORT & EXPORT :

SWIFT CODE : SBININBB426

AD CODE : 0004037